



Bow Road, London, E3

BUTLER & STAG



Set on the top floor of the sought-after Kira Building in Bow, this beautifully presented dual-aspect two bedroom, two bathroom apartment offers an unparalleled vantage point of London's iconic skyline providing breath-taking views.



Leasehold

- Top Floor Dual Aspect Apartment
- Open Plan Concept Living
- Two Bathrooms
- Chain Free
- 691 Sq/Ft Internal Living Space
- 180 Degree Balcony
- Two Bedrooms
- Lift Service To All Levels

The property comprises two well-proportioned double bedrooms and two modern bathrooms, including a principal bedroom with en-suite. The heart of the home is a spacious open-plan kitchen and reception area, designed to maximise both light and functionality, with large windows on multiple aspects flooding the space with natural light throughout the day.

Positioned on the top floor, the apartment enjoys an elevated outlook and enhanced privacy, while the dual-aspect layout creates a wonderful sense of openness rarely found in similar properties.

Further benefits include a private 180 degree balcony, ample storage, and access to a lift within this well-maintained development.

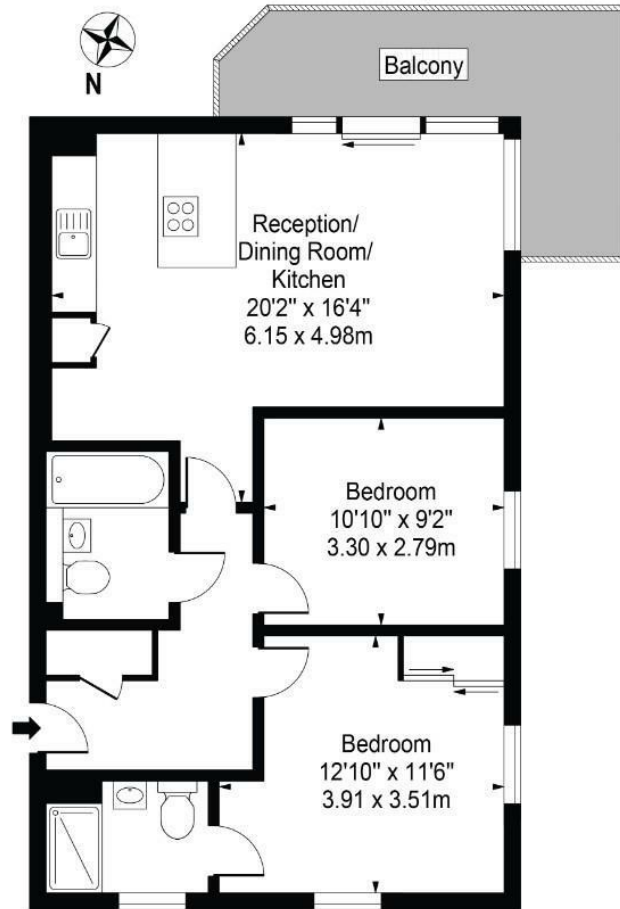
Kira Building is ideally located for excellent transport links, with Bow Road and Mile End stations within easy reach, providing swift access to the City, Canary Wharf and beyond. Residents also benefit from close proximity to local amenities, green spaces, and the vibrant lifestyle offerings of East London.





Kira Building

Approx. Gross Internal Area 691 Sq Ft - 64.20 Sq M



Fourth Floor

For Illustration Purposes Only - Not To Scale

This floor plan should be used as a general outline for guidance only and does not constitute in whole or in part an offer or contract.
Any intending purchaser or lessee should satisfy themselves by inspection, searches, enquiries and full survey as to the correctness of each statement.
Any areas, measurements or distances quoted are approximate and should not be used to value a property or be the basis of any sale or let.

BUTLER & STAG

☎ 020 8102 1236

🏠 508 Roman Road, Bow, London, E3 5LU

✉ bow@butlerandstag.com

www.butlerandstag.uk

IMPORTANT NOTICE - These particulars have been prepared in good faith and they are not intended to constitute part of an offer or contract. We have not performed a structural survey on this property and the services, appliances and specific fittings have not been tested. All photographs, measurements, floor plans and distances referred to are given as a guide and should not be relied upon.